

JEPPESEN

19 OCT 01

19-1

PUNITZ-GÜSSING

LOGG

PUNITZ-GÜSSING

Elev **950'** / 290 m

AUSTRIA

N47 08.9

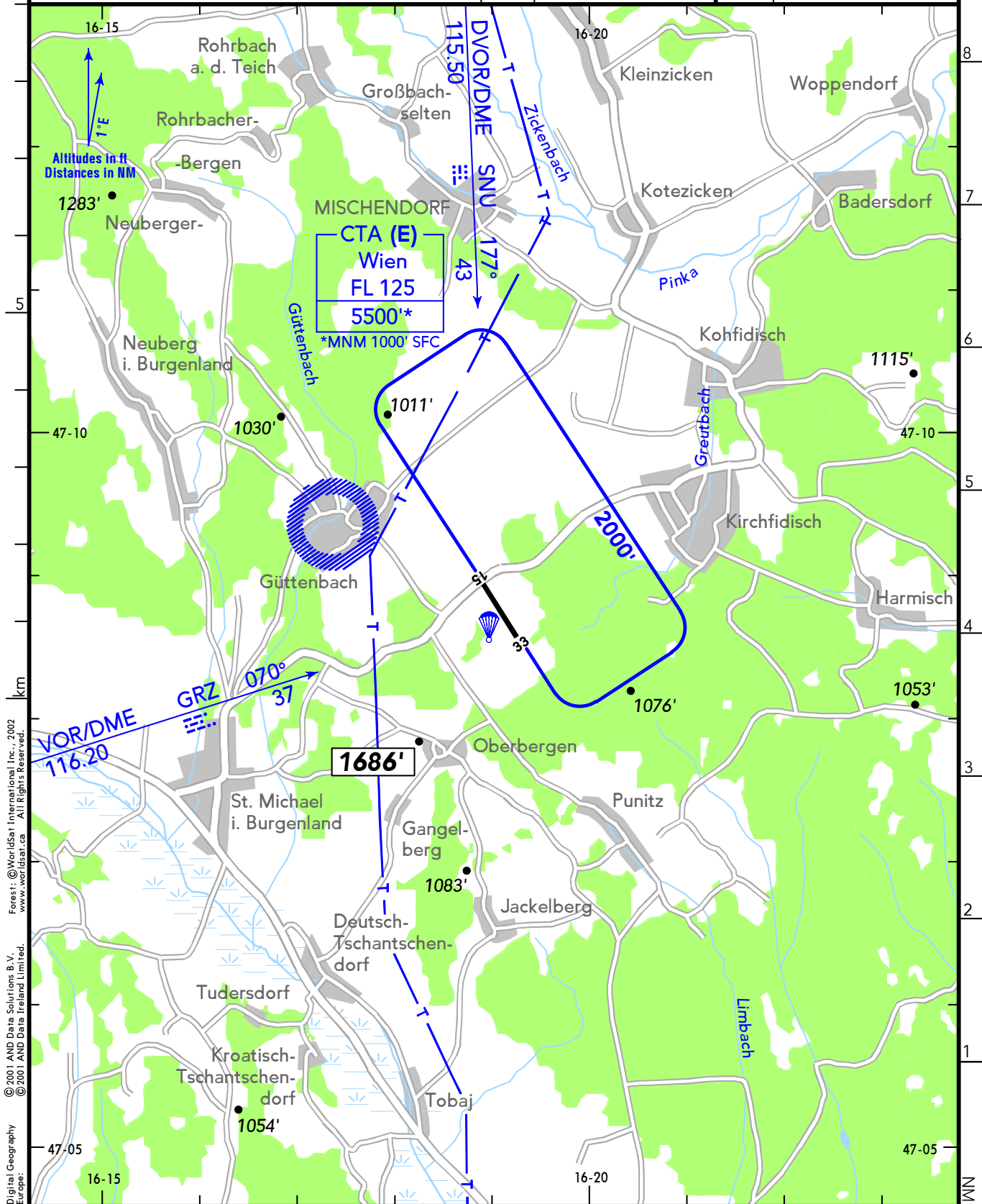
E016 19.1

5.4 NM N Güssing

(AFIS) 15 NM/3000' AAL

PUNITZ FLUGPLATZ **123.20**

RWY	ILS	RWY	ILS



© 2001 AND Data Solutions B.V.
 © 2001 AND Data Ireland Limited.
 Digital Geography
 Europe:
 Ferret, © WorldSat International, Inc., 2002
 www.worldsat.ca All Rights Reserved.

CHANGES: Direction arrows - AD coordinates.

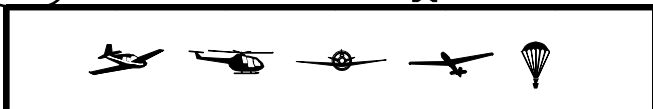
© JEPPESEN, 1993, 2001. ALL RIGHTS RESERVED.
 BOTTLANG AIRFIELD MANUAL®

PUNITZ-GÜSSING

19-2 19 OCT 01



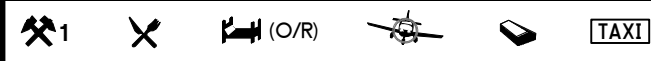
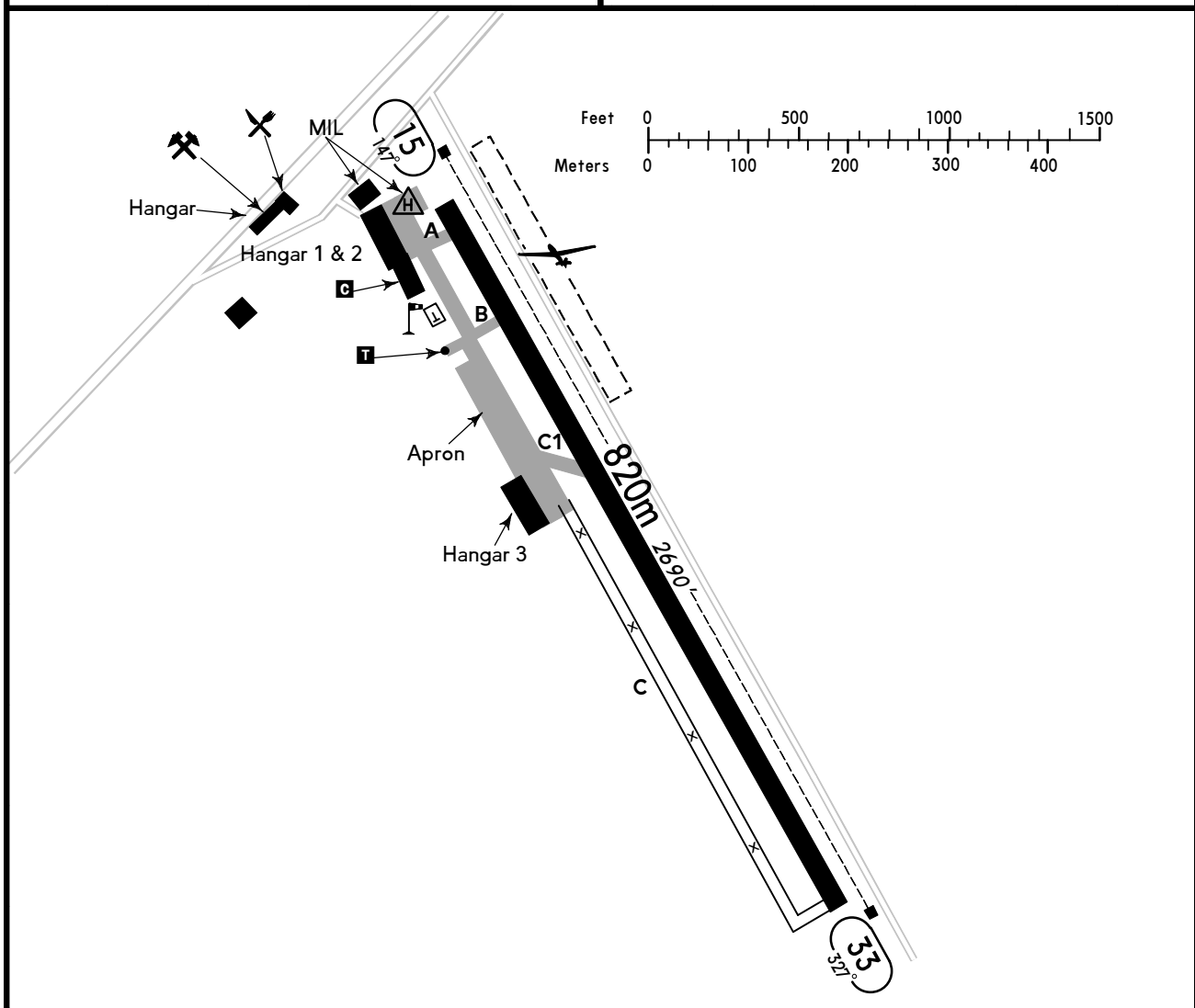
PUNITZ-GÜSSING



AUSTRIA

(FIS)

WIEN INFORMATION **124.40**



RWY No	Dimension (m) - Surface	TORA (m)	LDA (m)	Strength	Lights
15 33	820 x 18 Asphalt	820	820	6.7t AUV	---

Contact PUNITZ FLUGPLATZ at least 5 MIN prior airfield.

State border AUSTRIA-HUNGARY 5.4 NM E of airfield.

Look out for gliders (winch launching and glider towing) and parajumping.

Avoid residential areas near airfield - especially Güttenbach.

TWY "C" temporary closed.

PUNITZ FLUGPLATZ spätestens 5 MIN vor Platz rufen.

Staatsgrenze ÖSTERREICH-UNGARN 5.4 NM E des Platzes.

Auf Segelflüge (Winden- und Flugzeugschlepp) und Fallschirmsprungbetrieb achten.

Wohngebiete in Platznähe meiden - insbesondere Güttenbach.

TWY "C" vorübergehend geschlossen.