

JEPPESEN

29 SEP 93

19-1

FÜRSTENFELD

FÜRSTENFELD

AUSTRIA

LOGF

Elev **830'** / 253 m

N47 03.7

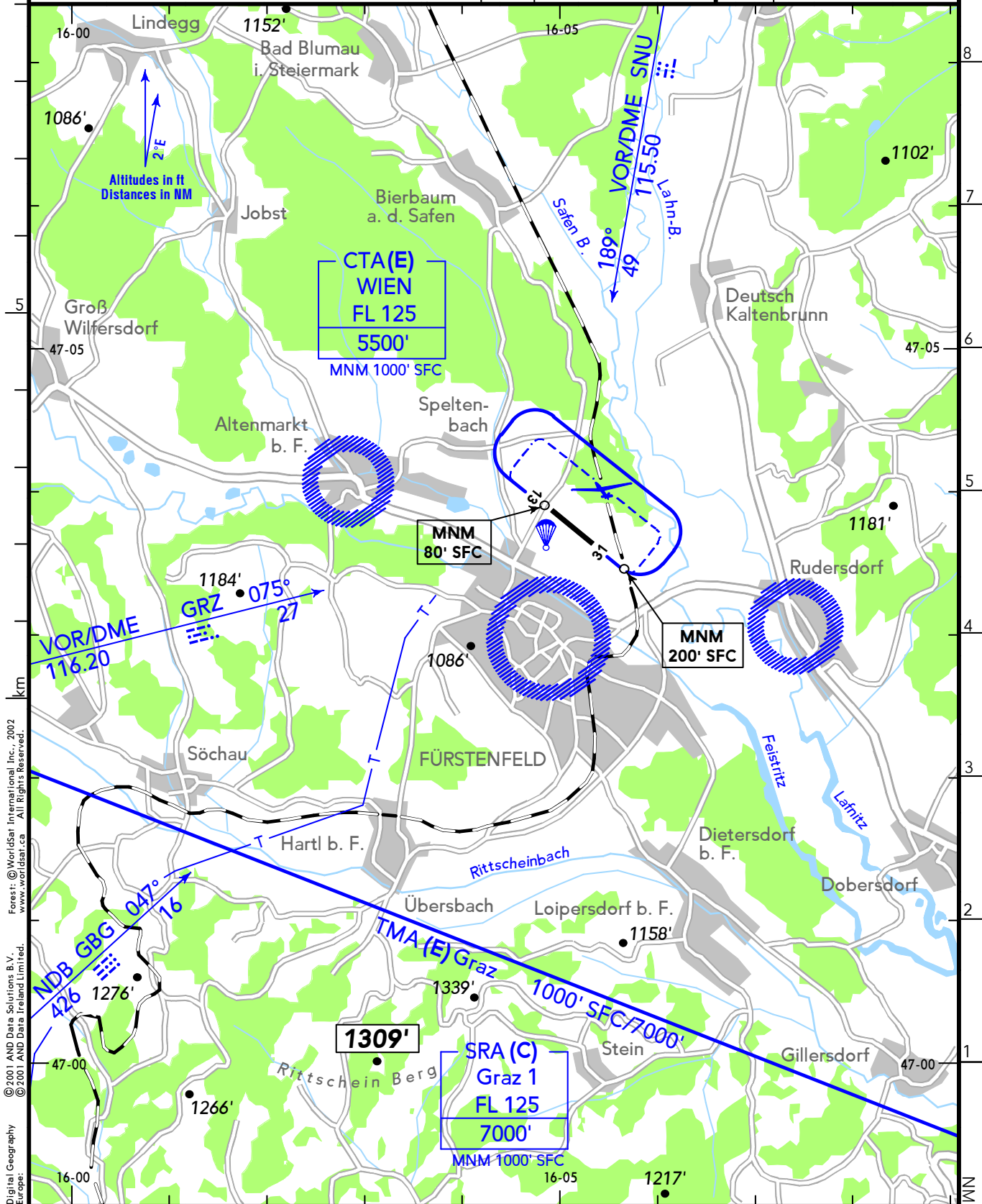
E016 05.1

1.2 NM N Fürstenfeld

(AFIS) 25 NM/3000' AAL

FÜRSTENFELD FLUGPLATZ **122.70**

RWY	ILS	RWY	ILS



Digital Geography © 2001 AND Data Solutions B.V. © 2001 AND Data Ireland Limited. Europe: Forast, © WorldSat International, Inc., 2002 www.worldsat.ca All Rights Reserved.

CHANGES: VAR - Airspace - Direction arrow "GBG".

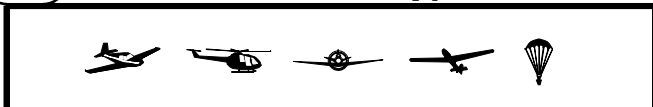
© JEPPESEN, 1986, 1993. ALL RIGHTS RESERVED. BOTTLANG AIRFIELD MANUAL®

**FÜRSTENFELD**

19-2 29 SEP 93



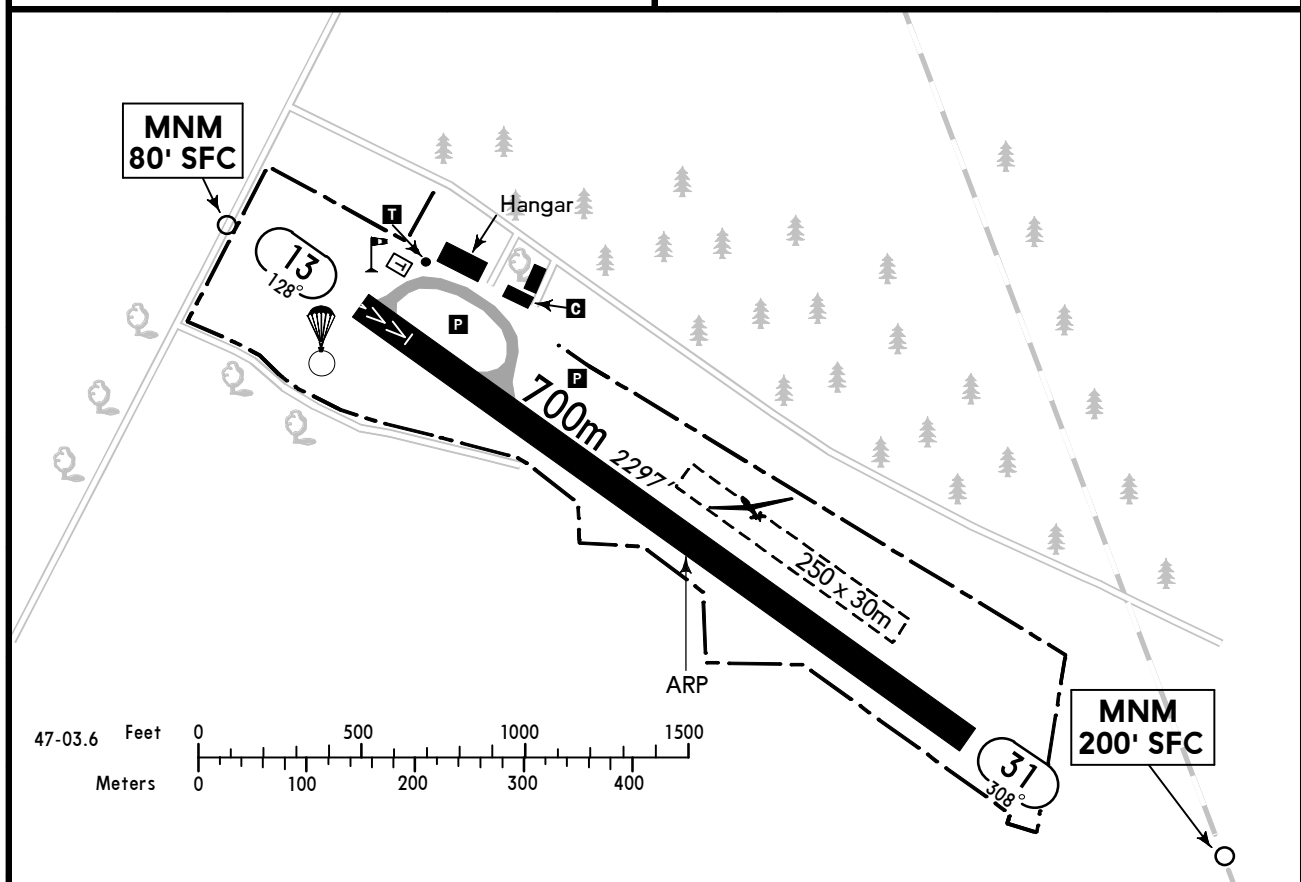
FÜRSTENFELD



**AUSTRIA**

(FIS)

WIEN INFORMATION **124.40**



RWY No	Dimension (m) - Surface	TORA (m)	LDA (m)	Strength	Lights
13	700 x 18 Asphalt	700	655	5.7t AUV	---
31		655	700		

Contact FÜRSTENFELD FLUGPLATZ at least 5 MIN prior airfield.

FÜRSTENFELD FLUGPLATZ spätestens 5 MIN vor Platz rufen.

Cross road within NW APCH/DEP sector at MNM 80' SFC, railway within SE APCH/DEP sector at MNM 200' SFC.

Straße im NW An-/Abflugsektor in MNM 80' SFC, Eisenbahnlinie im SE An-/Abflugsektor in MNM 200' SFC überfliegen.

Look out for gliders and parajumping.

Auf Segelflüge und Fallschirme achten.

Avoid residential areas near airfield.

Wohngebiete in Platznähe meiden.